



# Fully Stapled Duodenal Switch

Duodeno-ileal & Jejunio-ileal Anastomoses

**Mehran Anvari O.C., O.Ont., MB BS, PhD, FRCSC, FACS**

# CanMEDS & Financial Disclosures

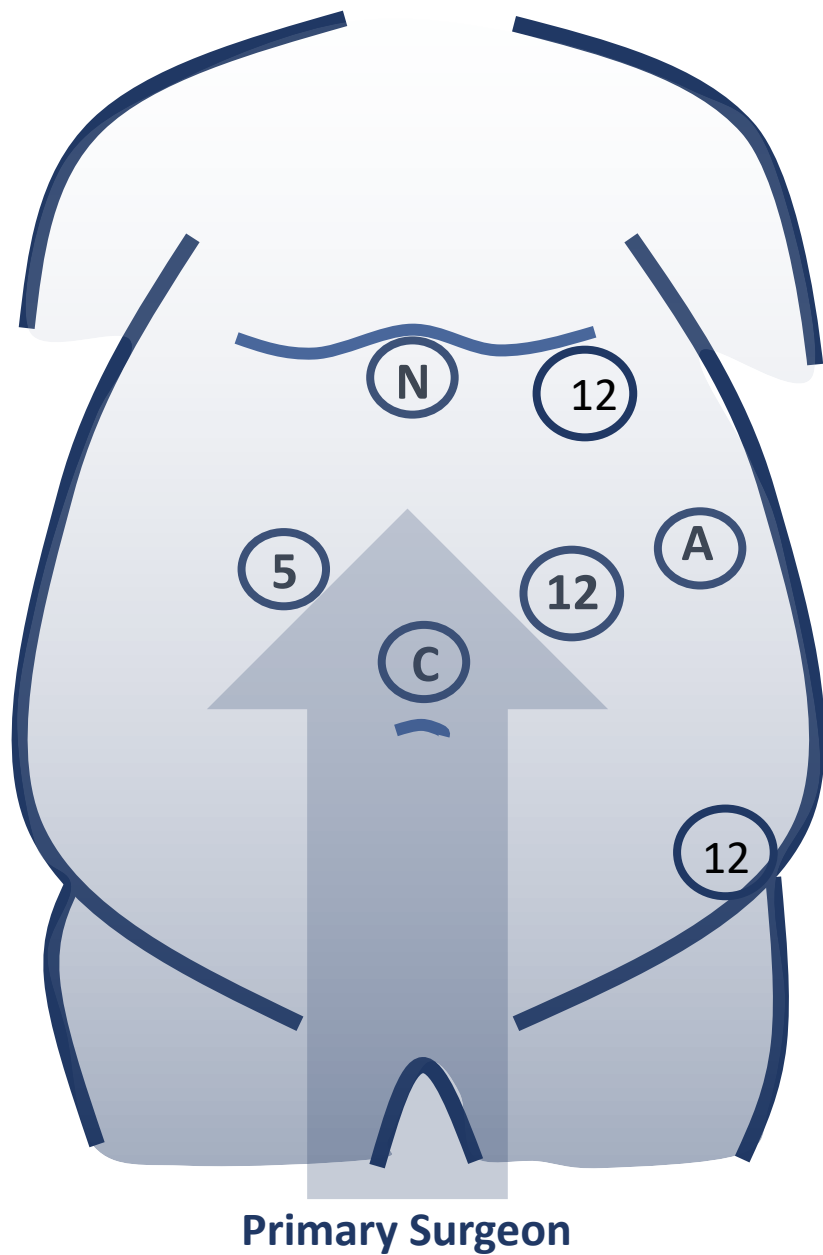
x	<b>Medical Expert</b> (as <i>Medical Experts</i> , physicians integrate all of the CanMEDS Roles, applying medical knowledge, clinical skills, and professional values in their provision of high-quality and safe patient-centered care. <i>Medical Expert</i> is the central physician Role in the CanMEDS Framework and defines the physician's clinical scope of practice.)
	<b>Communicator</b> (as <i>Communicators</i> , physicians form relationships with patients and their families that facilitate the gathering and sharing of essential information for effective health care.)
X	<b>Collaborator</b> (as <i>Collaborators</i> , physicians work effectively with other health care professionals to provide safe, high-quality, patient-centred care.)
X	<b>Leader</b> (as <i>Leaders</i> , physicians engage with others to contribute to a vision of a high-quality health care system and take responsibility for the delivery of excellent patient care through their activities as clinicians, administrators, scholars, or teachers.)
	<b>Health Advocate</b> (as <i>Health Advocates</i> , physicians contribute their expertise and influence as they work with communities or patient populations to improve health. They work with those they serve to determine and understand needs, speak on behalf of others when required, and support the mobilization of resources to effect change.)
x	<b>Scholar</b> (as <i>Scholars</i> , physicians demonstrate a lifelong commitment to excellence in practice through continuous learning and by teaching others, evaluating evidence, and contributing to scholarship.)
x	<b>Professional</b> (as <i>Professionals</i> , physicians are committed to the health and well-being of individual patients and society through ethical practice, high personal standards of behavior, accountability to the profession and society, physician-led regulation, and maintenance of personal health.)

	Speaker	Advisory	Research	Consultant
Insight Medbotics Inc.		x		

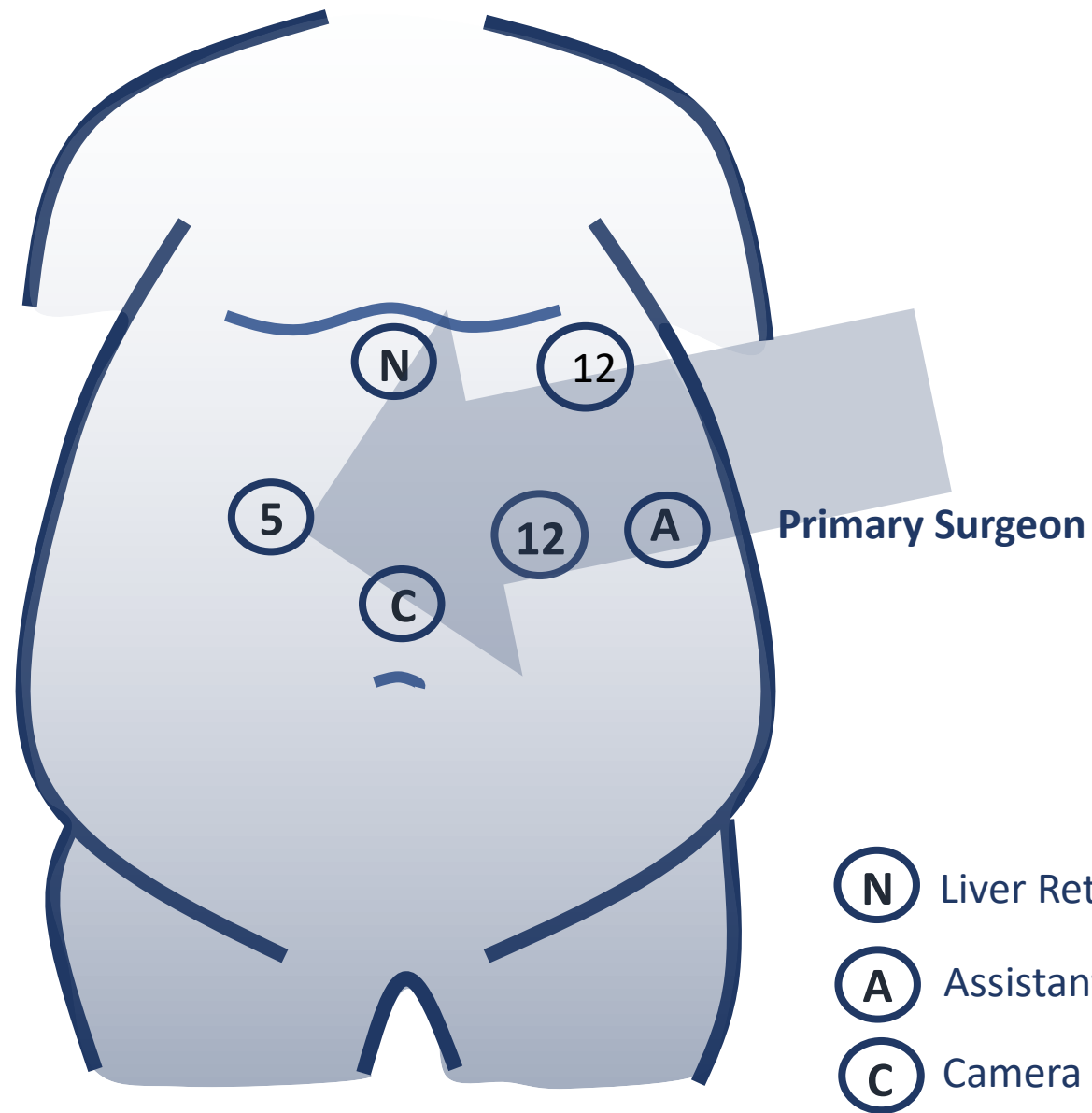
## **OBN DS/SADI Criteria**

- **Inclusion Criteria**
  - **BMI >55 or >50 if <30 yr of age**
  - **BMI >40 with severe metabolic disease**
  - **Weight regain**

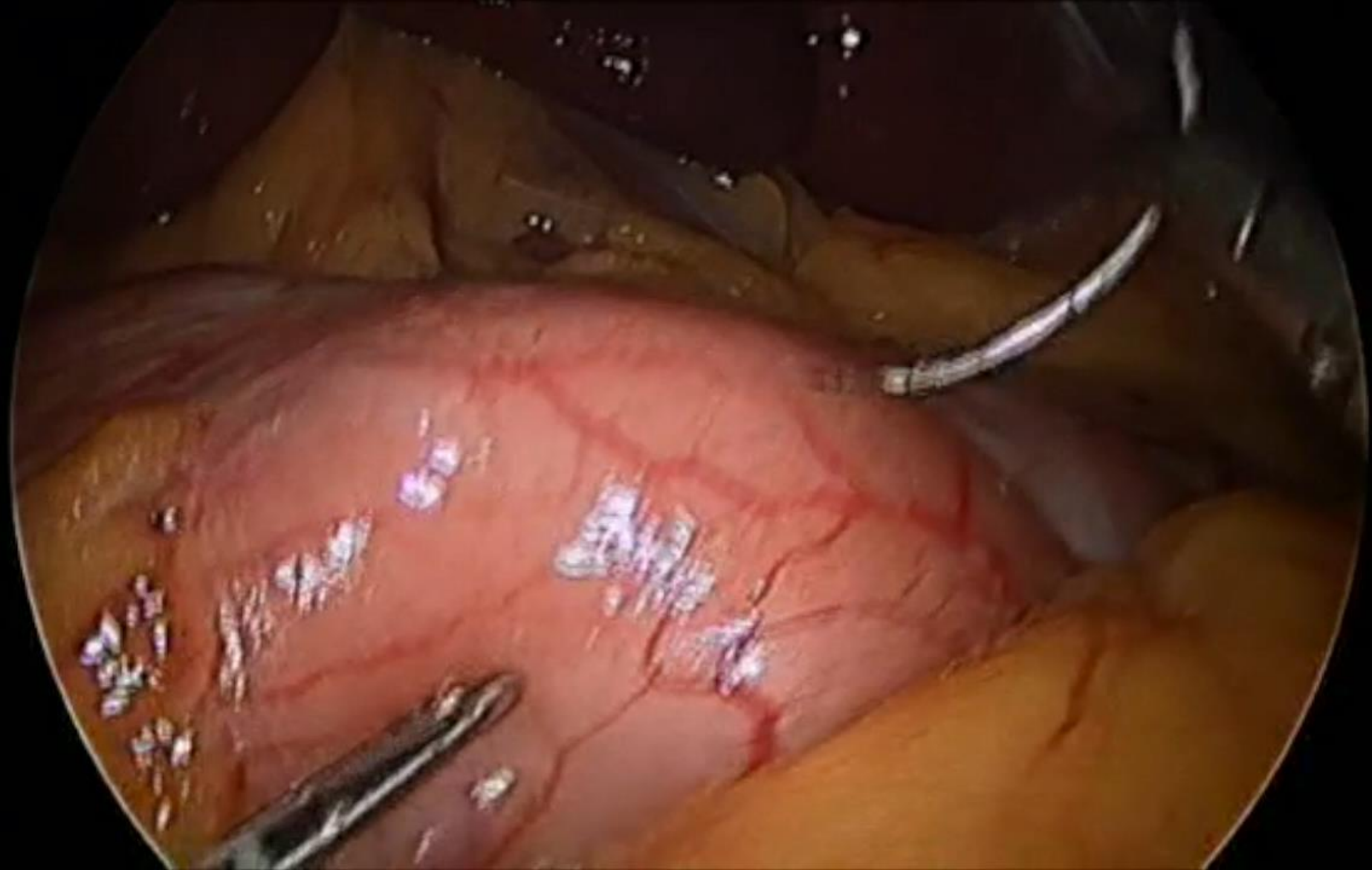
Creation of Duodeno-ileostomy



Creation of Jejunio-ileostomy

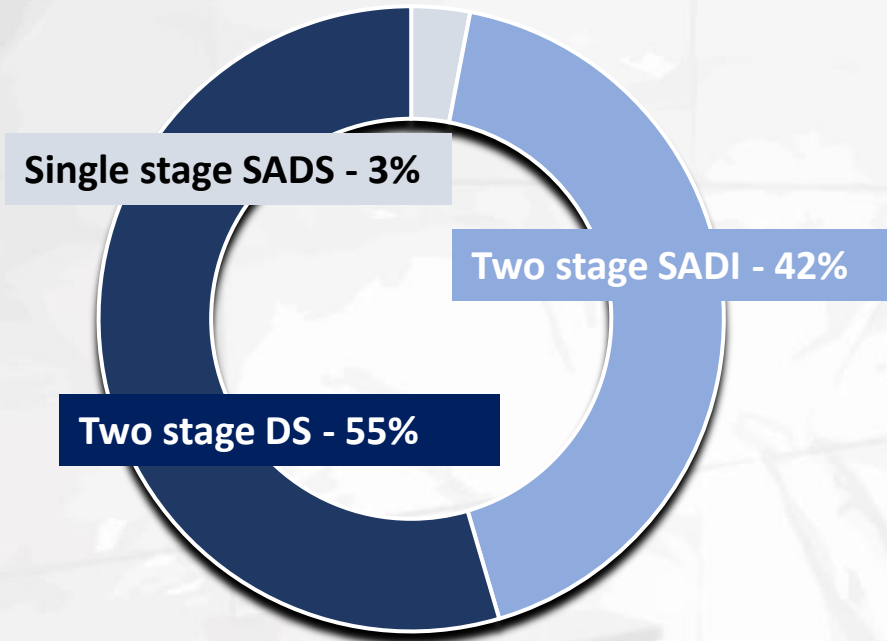


- (N) Liver Retractor
- (A) Assistant
- (C) Camera



# Fully Stapled Duodenal Switch

## Procedure Mix



400+ SADI/DADS in 10 years

**St. Joseph's**  
Healthcare  Hamilton

## Mean Operative Time

Two stage SADS	98 minutes
Two stage DADS	121 minutes

## Two Year Weight Loss Outcomes

	SADS	DADS	p-value
% EWL	44.1	51.7	0.168
% TBWL	24.8	30.2	0.116

Iranmanesh, Pouya, et al. "Comparison of Single- Versus Double-Anastomosis Duodenal Switch: a Single-Center Experience with 2-Year Follow-Up." *International Journal of Obesity*, vol. 45, no. 8, Nature Publishing Group, 2021, pp. 1782–89